

## Report to Tutors and Candidates on RCF Examinations in 2014

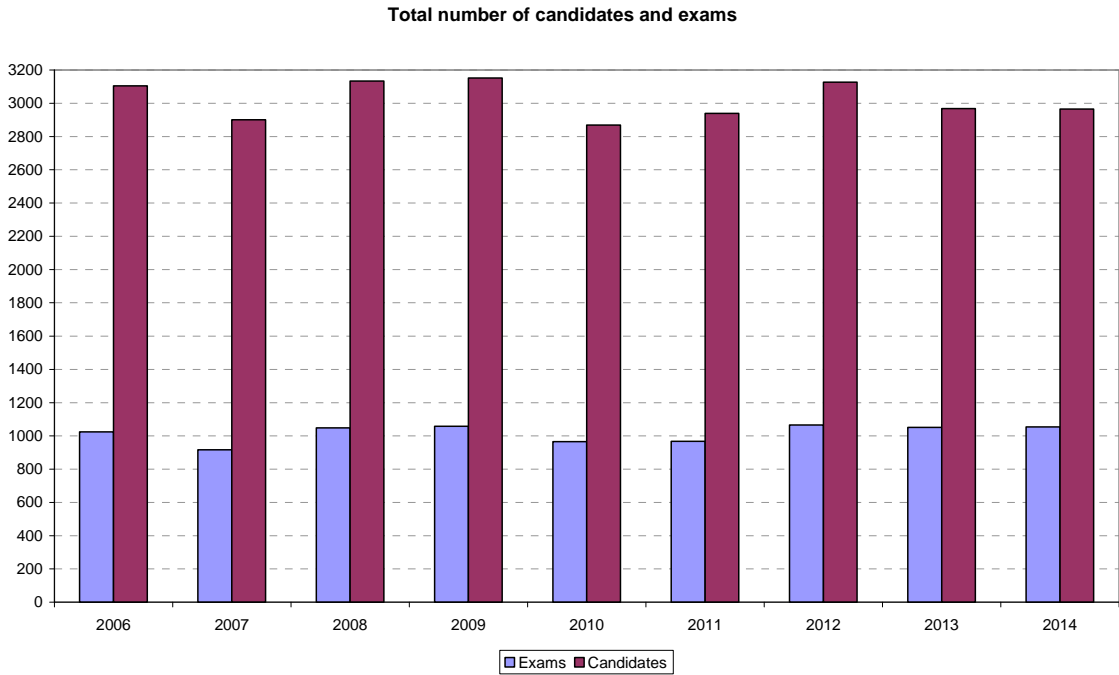
### Number of Candidates and Examinations

The table shows candidate and examination numbers since 2006. The number of Advanced exams assumes each centre is a separate exam to maintain comparability with Foundation and intermediate which were available at short notice. Advanced exams were held at six set times per year until 2012 when it was increased to seven giving an exam on every day of the week. Consideration is being given to additional Advanced examinations to avoid a lengthy wait for those centres restricted to particular days of the week. The question bank will need enlarging to facilitate this, which will take time.

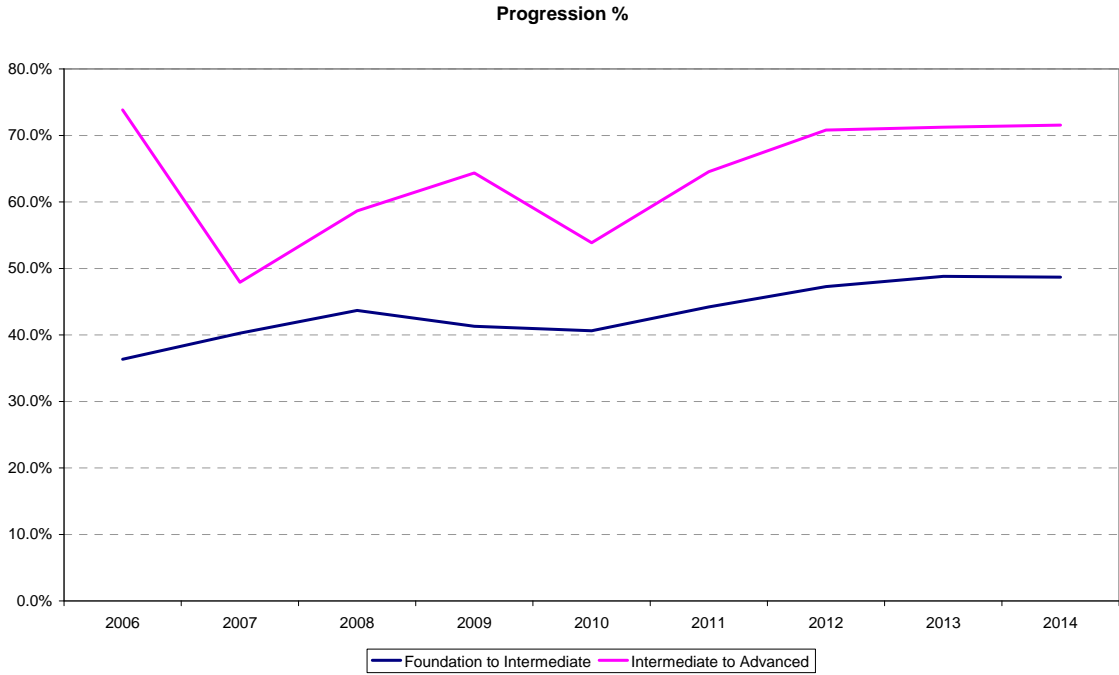
		<b>Foundation</b>	<b>Intermediate</b>	<b>Advanced</b>
<b>Number of Examination sessions</b>	2014	591	268	195
	2013	594	274	183
	2012	606	261	199
	2011	581	235	152
	2010	605	239	121
	2009	643	260	155
	2008	614	265	169
	2007	616	206	95
	2006	640	230	154
<b>Number of Candidates</b>	2014	1818	730	522
	2013	1759	736	473
	2012	1874	756	497
	2011	1837	694	408
	2010	1896	652	321
	2009	2021	704	426
	2008	2003	733	397
	2007	1965	646	289
	2006	2034	625	446
<b>Number of Passes</b>	2014	1481	682	303
	2013	1508	664	332
	2012	1599	702	350
	2011	1570	632	279
	2010	1605	596	222
	2009	1704	662	289
	2008	1678	677	263
	2007	1605	603	161
	2006	1719	604	326
<b>Pass rate</b>	2014	84.3	94.6	60.8
	2013	85.7	90.2	70.2
	2012	85.3	92.8	70.4
	2011	85.5	91.1	68.6
	2010	84.7	91.4	69.2
	2009	84.3	94.0	67.8
	2008	83.8	92.4	66.2
	2007	87.4	93.4	64.1
	2006	84.5	96.6	73

**In 2014 62 candidates were absent from the Foundation exam, 9 from Intermediate and 25 from Advanced.**

# Enrolments, Examinations and Progression



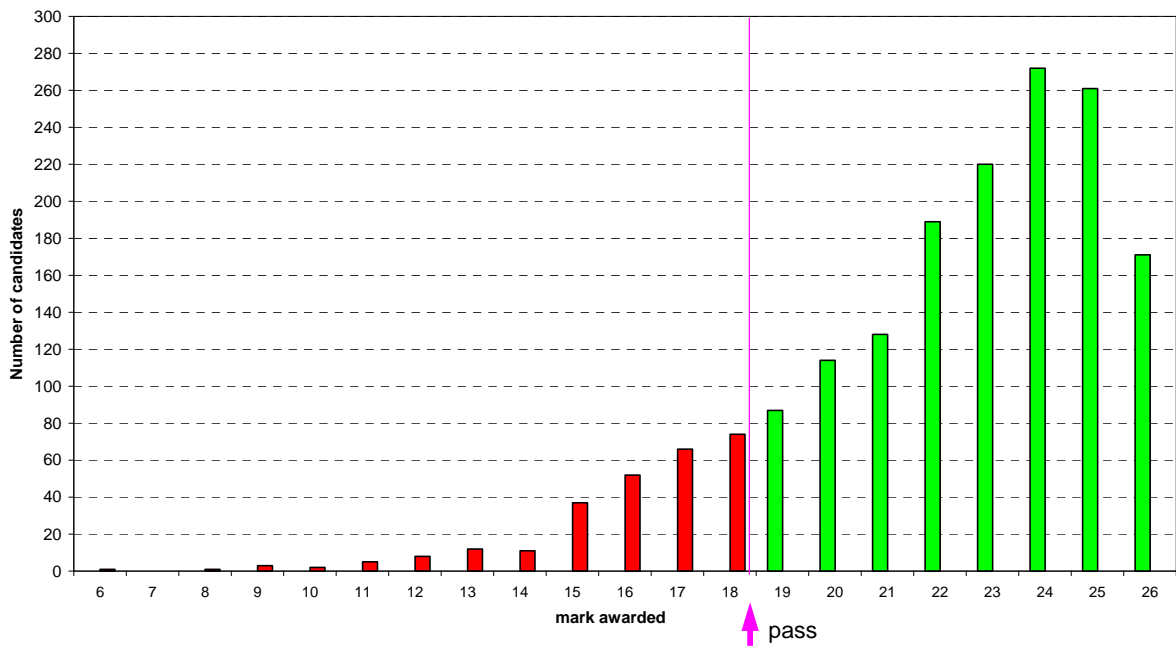
The total number of enrolments and exams from 2006 to 2014 is shown above. At Foundation the average number of candidates per exam is just over 3, falling to just over 2.5 at Advanced.



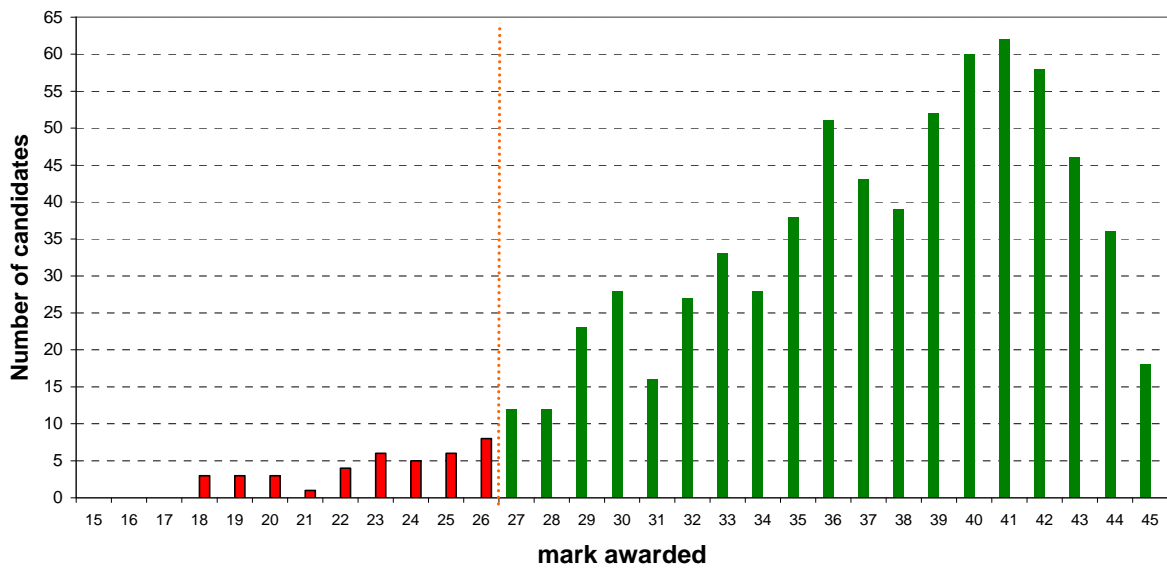
Progression from Foundation to Intermediate has stabilised at just below 50% but shows considerable room for clubs to seek to retain successful Foundation candidates and encourage continuation to Intermediate. It appears that having made the choice to study Intermediate a good 70% then progress to Advanced.

# Results for 2014

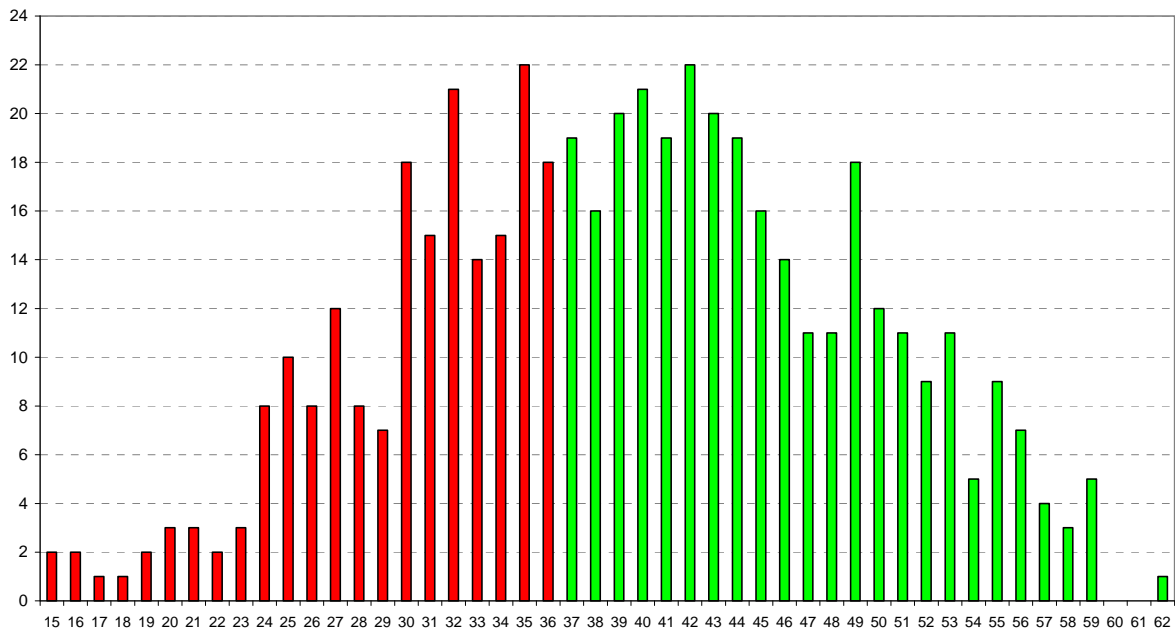
## Foundation Distribution 2014



## Intermediate Distribution 2014



### Advanced Distribution 2014



The distribution of marks for the three levels is shown above. What is noticeable is the number of candidates who are clearly not ready for the examination and possibly should not have been entered.

The detailed results by topic are not yet available. These are awaiting data extraction routines which are in the course of preparation alongside other software tasks. A further report will be presented in due course.

Examination Committee April 2015